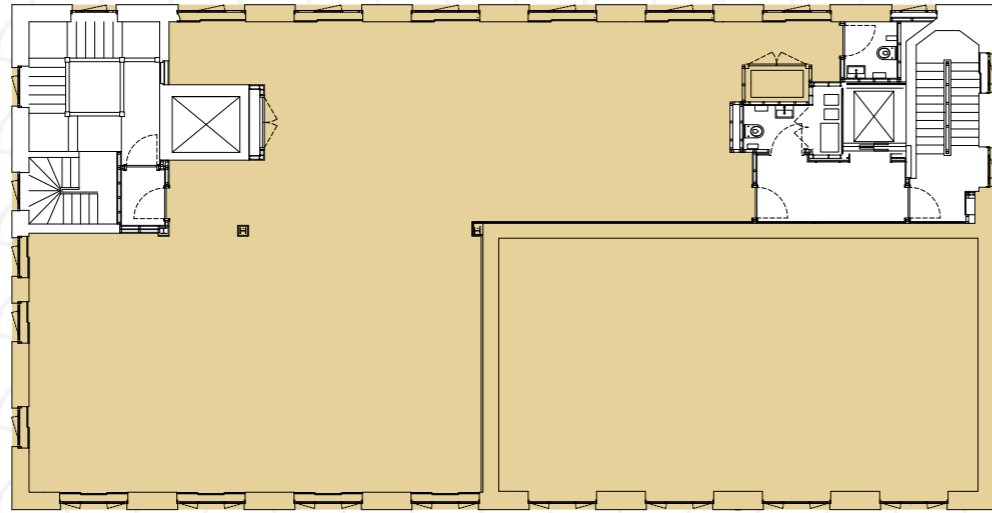




ALDERMANBURY
SQUARE

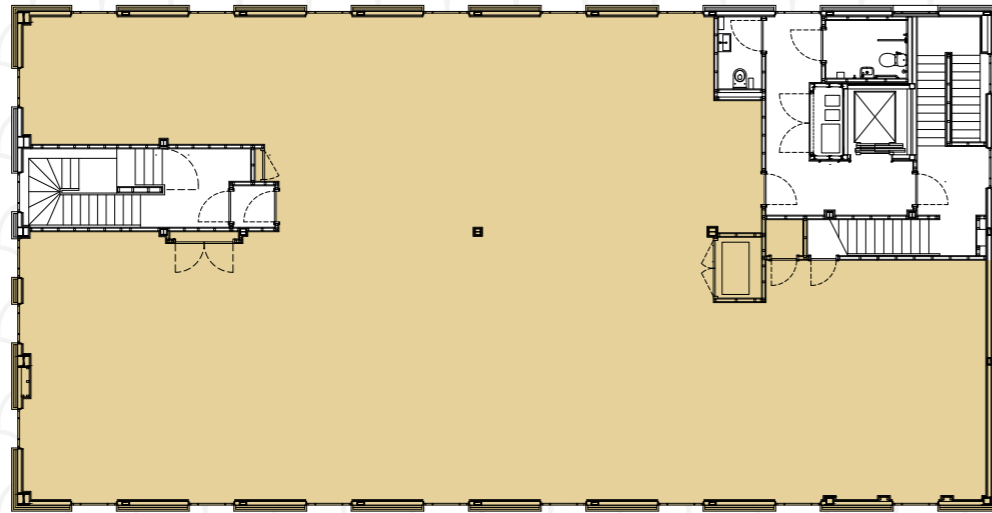
2ND FLOOR

1,919 sq ft /
178 sq m



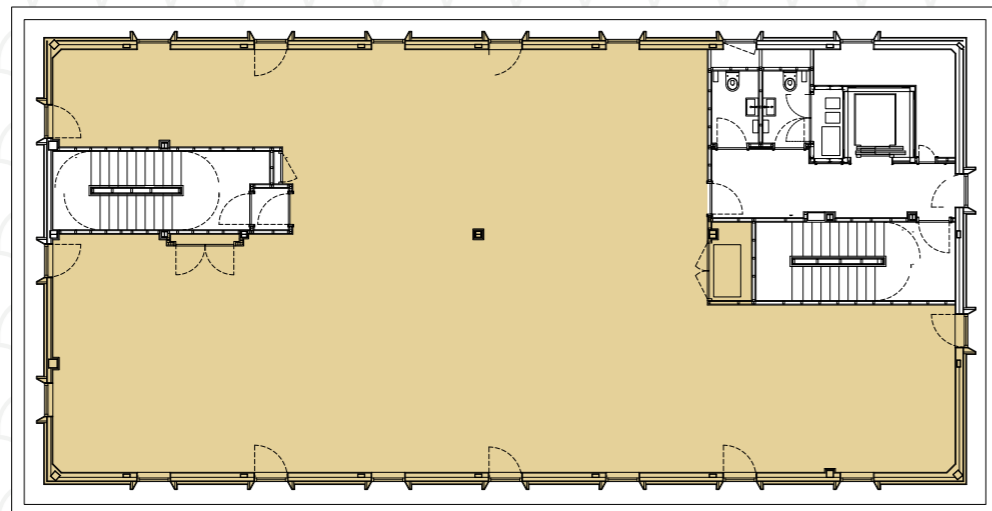
3RD FLOOR

3,123 sq ft /
290 sq m



4TH FLOOR

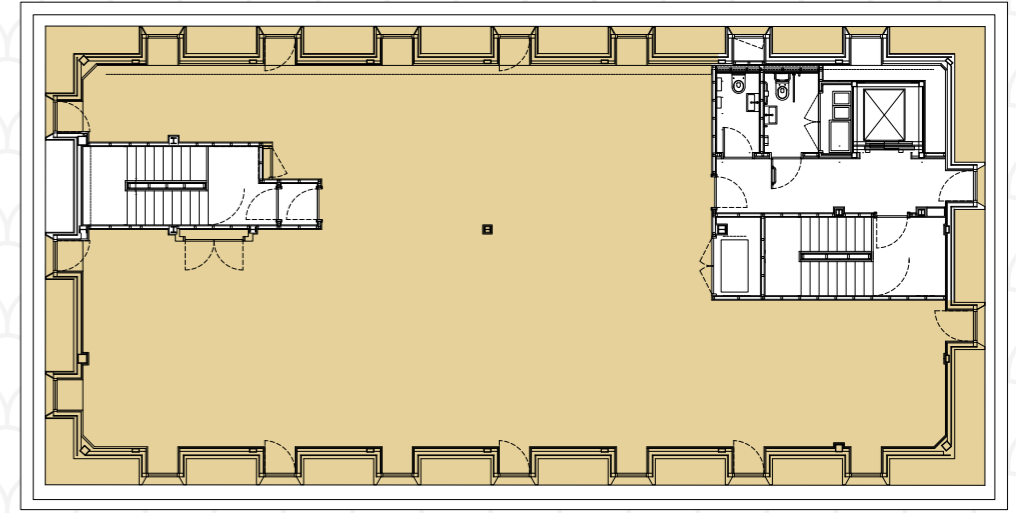
2,467 sq ft /
229 sq m



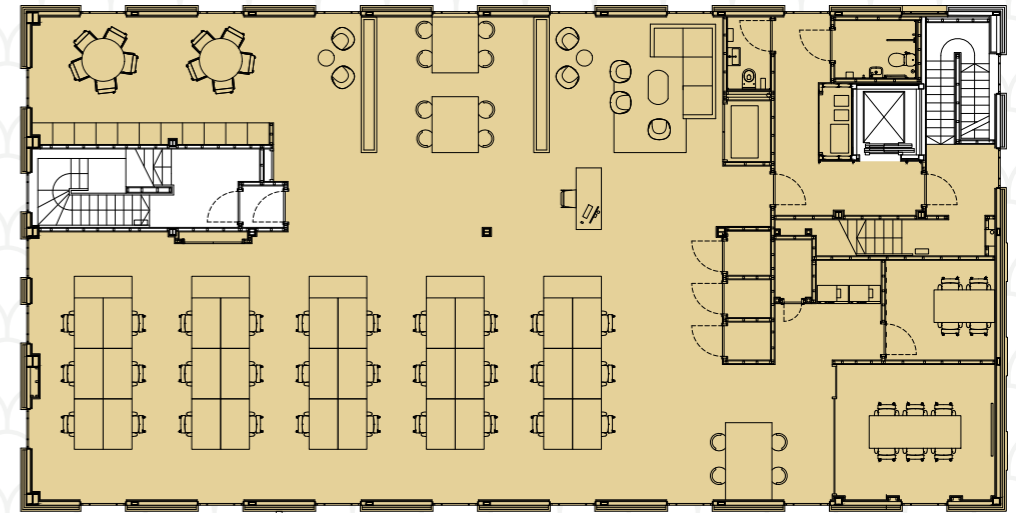
● Office ○ Core

5TH FLOOR

2,211 sq ft /
206 sq m



TYPICAL FLOOR PLAN



SCHEDULE OF AREAS

FLOOR	SQ FT	SQ M
5th Floor	2,211	206
4th Floor	2,467	229
3rd Floor	3,123	290
2nd Floor	1,919	178
TOTAL	9,720	903



ALDERMANBURY SQUARE

INGLEBY TRICE.



James Heyworth-Dunne
07779 327 071
jhd@inglebytrice.co.uk

James Gillett
07972 000 250
jgillett@savills.com

Jonty Robinson
07748 654 997
j.robinson@inglebytrice.co.uk

Artie Taylor
07866 203 403
artie.taylor@savills.com

14ALDERMANBURY.CO.UK

Ingleby Trice and Savills themselves and for the vendors or lessors of this property whose agents they are, have taken all reasonable steps to ensure the accuracy of these particulars which are a general outline only and do not constitute the whole or any part of an offer or contract. The information is given in all good faith but intending purchasers and lessees must satisfy themselves independently as to the accuracy of all matters upon which they intend to rely. Ingleby Trice and Savills are limited liability partnerships regulated by RICS. A list of members is available at our registered office Registered in England. Registered number OC356464. Registered office as address. October 2023.